

# HUB COVERS

Specifically designed for Dana Spicer Drive Axle Hub Covers, these Iowa Customs products are built to last. Designed and crafted from 304 Corrosion Resistant #8 Non-Directional Stainless Steel. Available in different hole configurations. Please refer to our fitment guide for correct fitment.

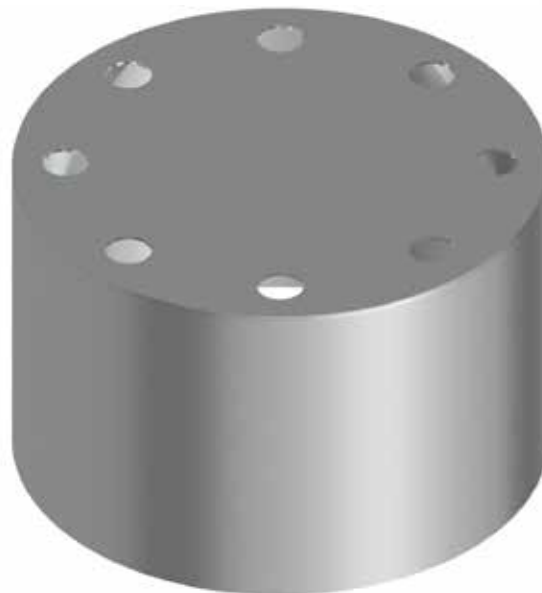
**304 CORROSION RESISTANT**  
 304 Stainless Steel | Rust Free | Weather Proof



IC982001-14



IC982002-14



IC982003-14



UNIVERSAL  
FITMENT  
GUIDE



## PRODUCT INFORMATION

**Fitment:** Dana Spicer Hub Only

Part #	Product	Hole Shape	Cover Details	Finish
IC982001-14	Hub Cover	Round	(8) Axle Plastic Flat Top Push On Nut Cover - Sold Individually	#8 304 Polished Stainless Steel
IC982002-14	Hub Cover	Oval	(8) Axle Plastic Flat Top Push On Nut Cover - Sold Individually	#8 304 Polished Stainless Steel
IC982003-14	Hub Cover	Blank	(8) Axle Plastic Flat Top Push On Nut Cover - Sold Individually	#8 304 Polished Stainless Steel